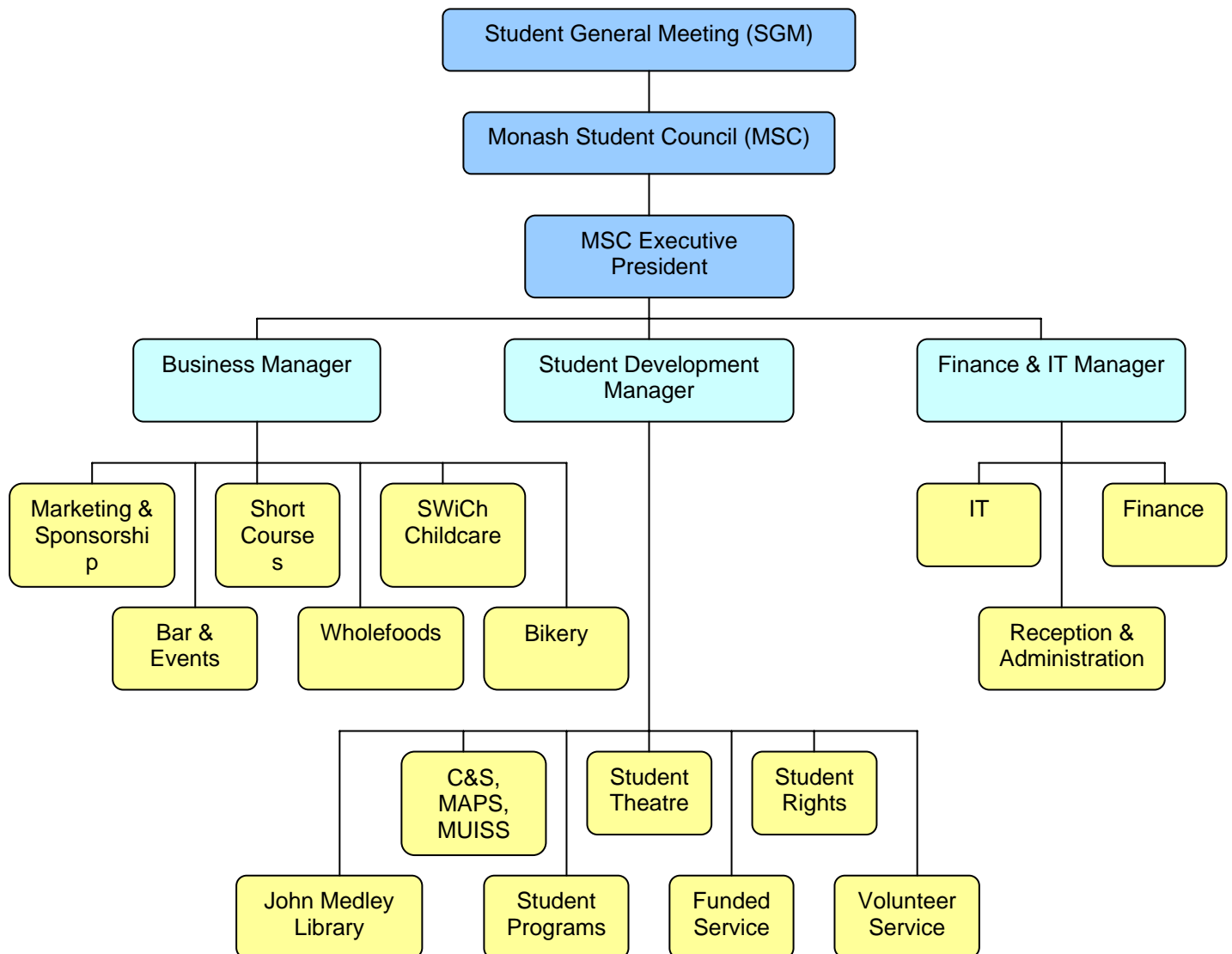


Organisational Structure



MSC (Monash Student Council)

MSC is the MSA's governing body (second only to an SGM). There are 20 voting members of MSC in total. The members of MSC are:

President; Treasurer; Secretary; Education (Academic Affairs) Officer; Education (Public Affairs) Officer; Activities Chair; Welfare Officer; Environment and Social Justice Officer; Wom*n's Officer; Female Queer Officer; Male Queer Officer; C&S President; MAPS President; MUISS President; Indigenous Representative; 5 General Representatives.

Office-Bearer Departments

MSA Executive

President, Treasurer and Secretary. The Executive are responsible for the day-to-day running of the MSA.

Activities

The Activities department works year-round to bring you social events and entertainment on and off campus. Throughout semester one & two, student volunteers run big act Union Nights which have lined up bands like George, Something for Kate, Powderfinger and The Whitlams. There's also cellar nights, lunchtime bands, BBQs, trivia nights, Oktoberfest, Comedy Week, Campus Games and the infamous Green Week.

Education Academic Affairs

The Education (Academic Affairs) Department focuses on ensuring student representation within the university structures. The EAAC Officer sits on university committees and focuses on making students' voices heard in the development of university policies.

Education Public Affairs

The Education (Public Affairs) Department campaigns on issues around tertiary education both to the university and the wider community. Over the past few years a major focus has been Voluntary Student Unionism (VSU) and its effect on students and student unions. Other major campaigns have been run on reforms to higher education and student poverty.

Environment and Social Justice

The MSA Environment & Social Justice Department facilitates student involvement in sustainability and social justice, both on campus and in the wider community. It focuses on issues such as minimising waste and promoting recycling on campus, and campaigns on broader environmental issues in the wider community.

Host Scheme

Host Scheme is the MSA's student-run orientation program. It is run by students who have been there, done that, and takes the edge off starting uni and not knowing where to go or how to fit in. Host Scheme runs camps, tours, a festival day and a huge party attended by more than 2,500 students.

Indigenous

The Indigenous Justice Projects Office exists to support and encourage active Indigenous justice campaigns and to promote an understanding of, and commitment towards, redressing Indigenous justice issues amongst the student body.

Queer

The MSA Queer Department functions as a safe and supportive space for all queer students on campus. This includes any student who does not identify as being straight in sexual orientation, trans students and students who are questioning their sexuality and/or gender identity. It exists to provide a discussion space, a social network, and to raise awareness about the issues queer students live with both on and off campus. The Queer lounge also proves a safe and supportive space for all queer students on campus. The two Queer Offices are also there to provide support, advocacy and a referral service for queer students faced with discrimination, harassment or other related issues.

Welfare

The MSA Welfare Office coordinates student-equity projects such as the Survival Centre, Computer Co-op and Free Food Mondays. Not everyone has the same access to simple resources, like a home, a computer, food and a living income, all of which affect their life at university, and the Welfare service works to assist these students.

Wom*n*s

The Wom*n's department advocates, promotes and addresses the specific needs of Wom*n students on campus through campaigns, debates, discussion groups, workshops, activities and their annual publication Dissent. The Wom*n's lounge provides a safe and supportive space for all Wom*n students on campus. The Wom*n's Officer is also there to provide support, advocacy and a referral service for wom*n faced with discrimination, harassment or other related issues.

Lot's Wife

Lot 's Wife is the MSA's 100% student-produced newspaper. Students interested in photography, writing, typesetting, design or investigative journalism are able to get their work in print. Anyone can submit articles, funky graphics, reviews or whatever else that will print. You'll find a new copy around campus every four weeks during semester.

Divisions

Clubs & Societies

C&S (Clubs & Societies) supports and administers all the non-sporting clubs on campus. C&S clubs are run by students, and as an MSA division, clubs receive funding and support through the C&S Council. There are around 100 clubs and societies on campus, including cultural, academic, performing arts, halls, spiritual, political, social welfare and special interest clubs. Clubs receive grants which help them run BBQs, camps, productions, career nights, workshops, balls and other events.

MAPS (Mature-Age and Part-Time Students)

MAPS (Mature Age & Part-Time Students) assists mature aged (23 yrs and over), part-time and distance education students integrate into university life and looks after their interests. The MAPS lounge and Quiet Study Area / Computer room is equipped with facilities to make life as a student a little easier, including networked computers, printing, scanning and facsimile services, refreshments corner and daily newspapers.

MUISS (Monash Uni International Student Service)

Monash University International Students Service (MUISS) is a division of the Monash Student Association and represents the interests of international students. MUISS offers a lounge, professional advice and international newspapers. MUISS also runs a large number of affordable social activities throughout the year with the premier event being the Multicultural Festival in August.

Non Office-Bearer Departments

Bar and Events

Sir John's Bar is the MSA's bar, serving up coffee, meals and of course beer from 11am until 5:30pm weekdays during semester. The Bar Coordinator also offers support to MSA events run by Activities and other departments.

Finance

The backbone of the MSA, finance takes care of most of the administrative side of the MSA, including HR and of course finance.

IT

Our resident IT officer deals with all technical requirements in the MSA.

John Medley Library

The John Medley Library is the only recreational library on the Clayton campus. It's open 10am-4pm weekdays throughout the year and has a library of CDs, DVDs, books and magazines for borrowing. It also has the cheapest photocopying on campus.

Marketing & Sponsorship

The Marketing department assists all departments in generating income through marketing and sponsorship of MSA events as well as the MSA generally through the Culture Card. Marketing also works on promotion of the MSA and MSA events.

Short Courses

The Short Courses Centre offers a range of quality courses to students at subsidised prices. Short Courses runs offers a wide range of courses to help you pursue an interest, learn new skills or boost your employment prospects. Courses range from car maintenance to computer training, belly dancing to book keeping, First Aid to French and pottery to philosophy. Most courses run for less than twenty hours and are available at a range of times. Course guides are available online and around campus.

Student Rights

The role of Student Rights staff is to help students navigate their way through the processes of the university and ensure that their rights as a student are met. The Student Rights service assists and represents students with academic grievances, including students who are facing exclusion, having discipline problems or have a complaint against university staff.

Student Theatre

MSA Student Theatre presents sold-out productions every semester. Anyone with an interest in theatre is welcome, from the people in black that stage-manage and operate lights, to set designers, writers and directors to budding dancers, actors and singers. No previous experience is required and everyone is welcome.

SWiCh Childcare

SWiCh (Students with Children) is the MSA's childcare centre, providing sessional and full day care for students with children at affordable prices. Located within the Short Courses Centre, SWiCh offers nursery, toddler and pre-school care. The centre is accredited with qualified staff providing quality programming for the age groups.

Transport

MSA Transport works to promote alternative travel options to the Clayton Campus. Transport officers can help you find out your best public transport or cycling route or match you up with people from your area for RideShare carpooling. Currently the Transport office is staffed by volunteers and is only open on Tuesdays during.

Wholefoods

Wholefoods restaurant is a student-run restaurant and café, which provides affordable vegan and vegetarian meals, coffee and snacks during semester. It also offers students café and restaurant experience through opportunities to volunteer. The Wholefoods restaurant, located on level 1 of the Campus Centre (next to the John Medley Library) is open for breakfast and lunch and can be used for a variety of cultural and social events.

Culture Card

The Culture Card is the MSA's subscription campaign. Culture Card membership is open to students and staff (including from other Monash campuses). In exchange for supporting the MSA, Culture Card members get discounts on MSA events and services, including Activities events, club memberships, Wholefoods, Sir John's Bar, Student Theatre, John Medley Library, Short Courses and more.